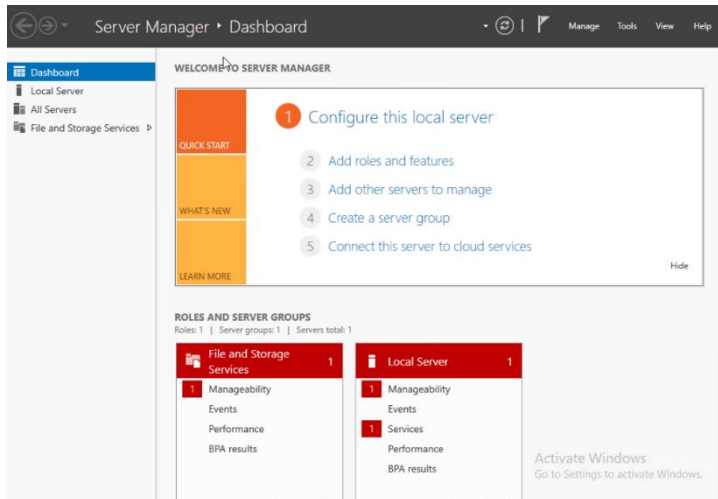


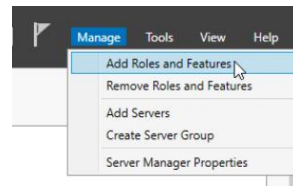
Internet Information Services

1.1 How to install the ISS on a Windows Server virtual machine

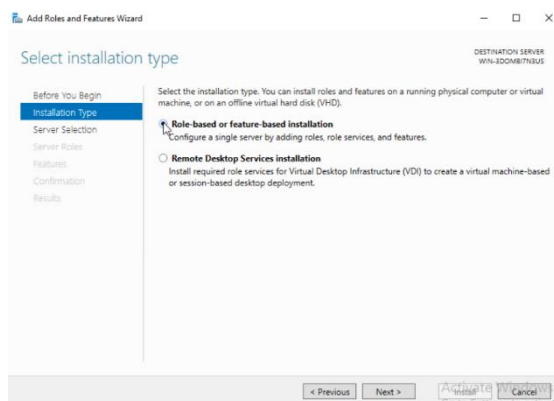
1. First, you need to connect yourself on your virtual machine on VCenter.
2. Then you search **Server Manager** and open it. It looks like that:



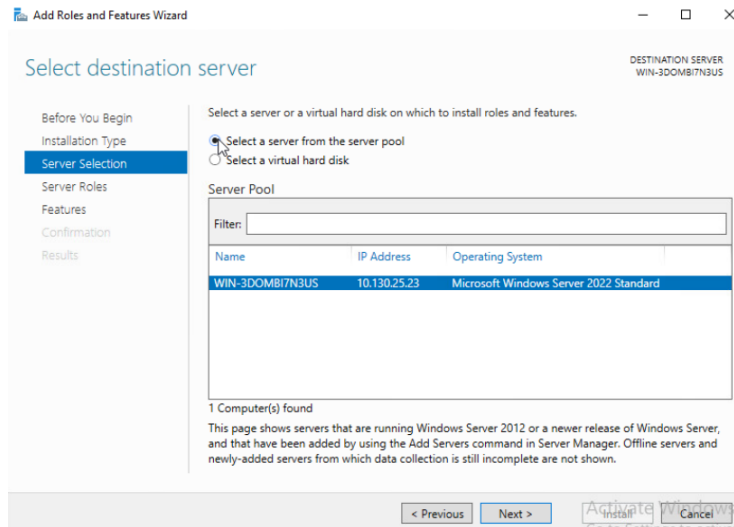
3. You go to **“Manage”** → **“Add Roles and Features”**.



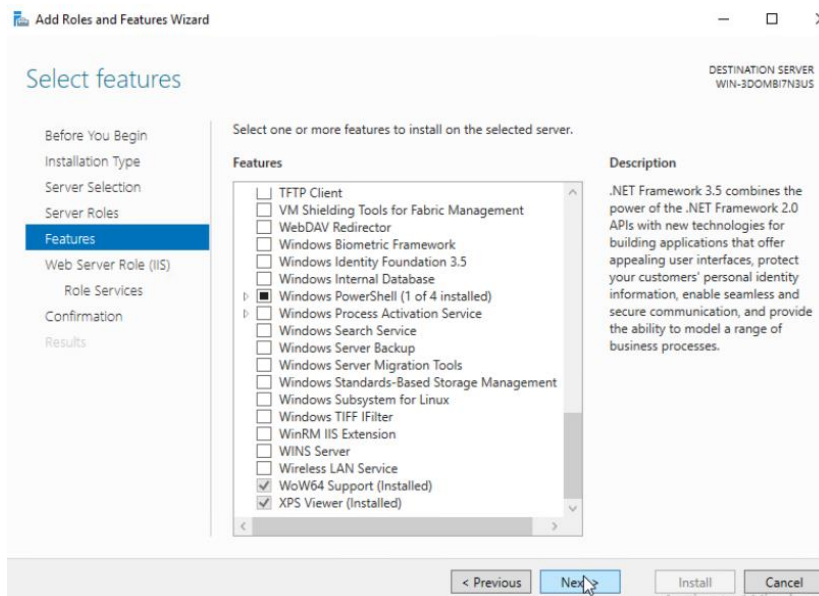
4. Skip the 1st page (if you want you can skip it by default).
5. Choose the **“Role-based or feature-based installation”** and click **next**.



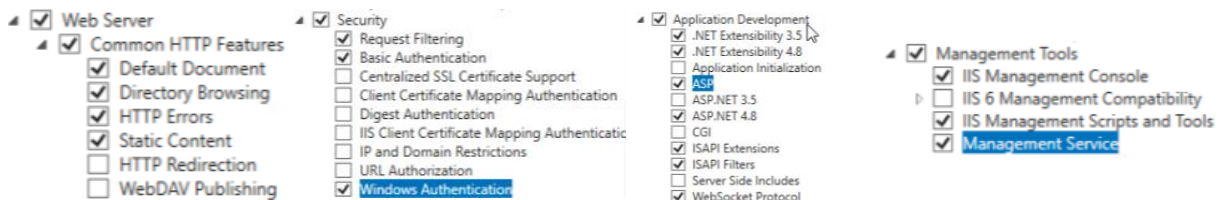
6. Choose **“Select a server from the server pool”** and click **next**. The local server is selected by default.



7. Choose **“Web Server (IIS)”** and click **next**.
 8. On select features, don't do anything, just click **next**.



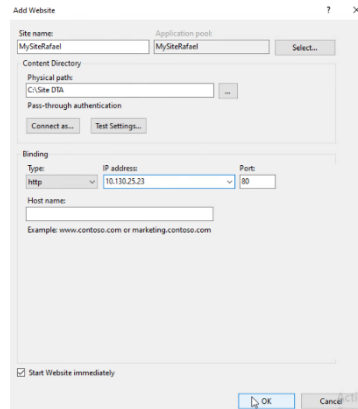
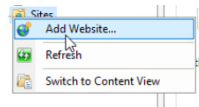
9. On the features of Web Server Role (IIS) choose these ones and click **next**:



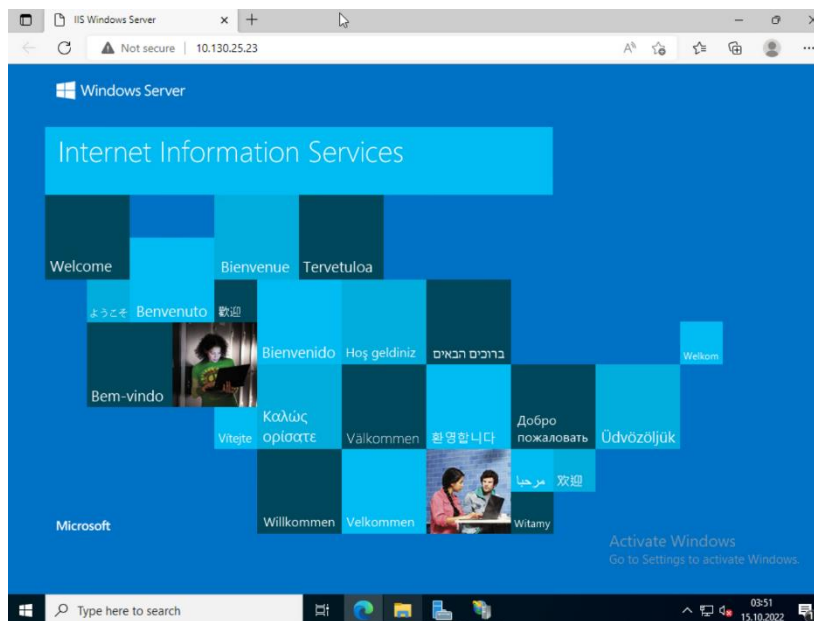
10. Confirm installation selections and **install**.

1.2 Create a site on :80

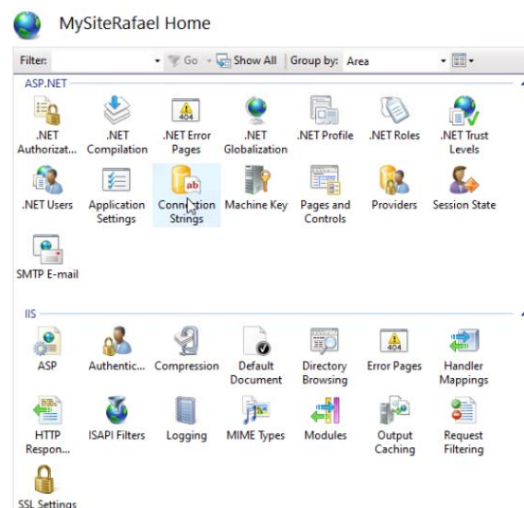
1. Open the **ISS**.
2. On “sites”, right click and select “**add website**”.
3. Choose a site name, a physical path, an IP address and an 80 port.



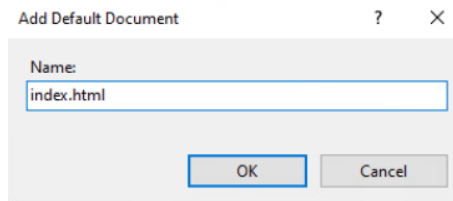
4. We can see that when we open the website it looks like that:



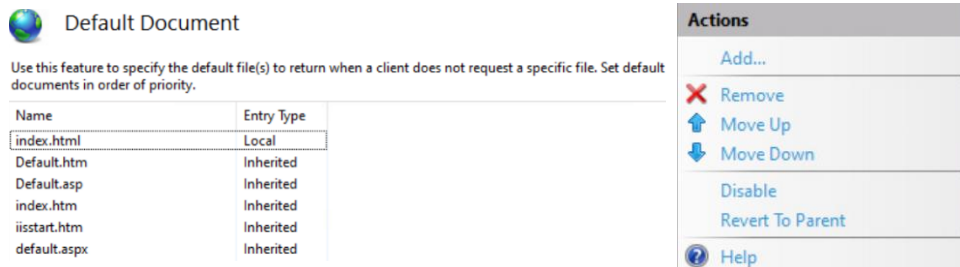
5. To change the display of the website, we need to set up the order of the default documents. To do it, we need to choose “**default document**” on the site features.



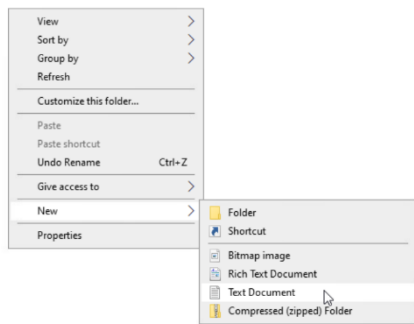
6. Right click → **add**. Add a default document with the name **“index.html”**.



7. To prioritize the **index.html** document we need to put it on 1st in the list. To do it we have a button **“Move Up”** on the right column.



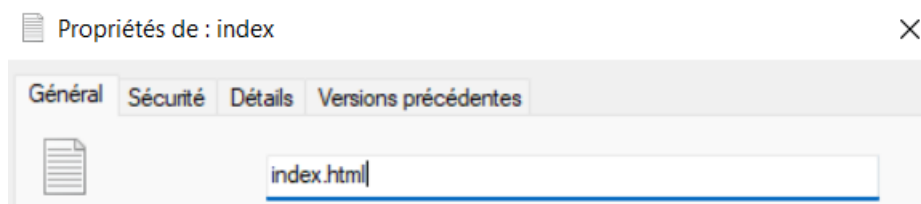
8. Then we go on the **physical path** of the site and create a **text document**.



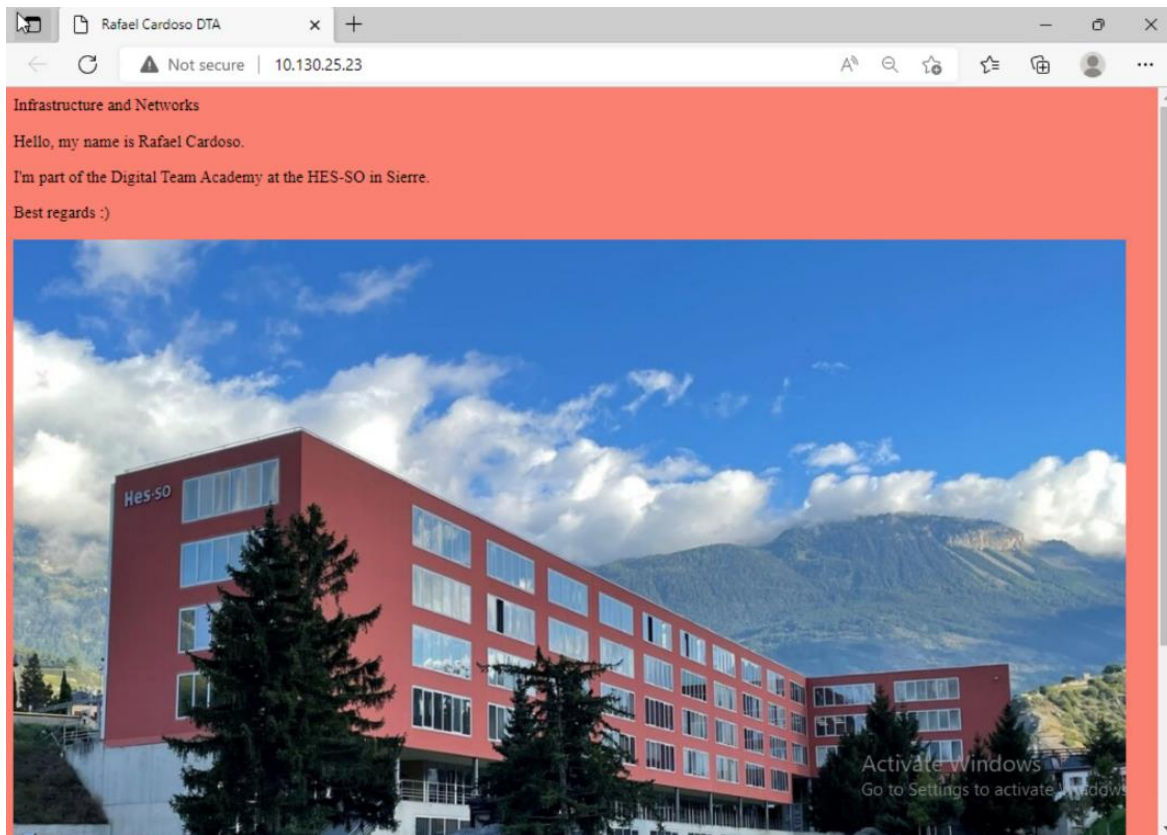
9. We write our HTML code on the notepad:



10. When we save the text file, we need to change it to a **html file**. To do it we right click and go to **properties**. Then we change the file name to **“index.html”** and save.

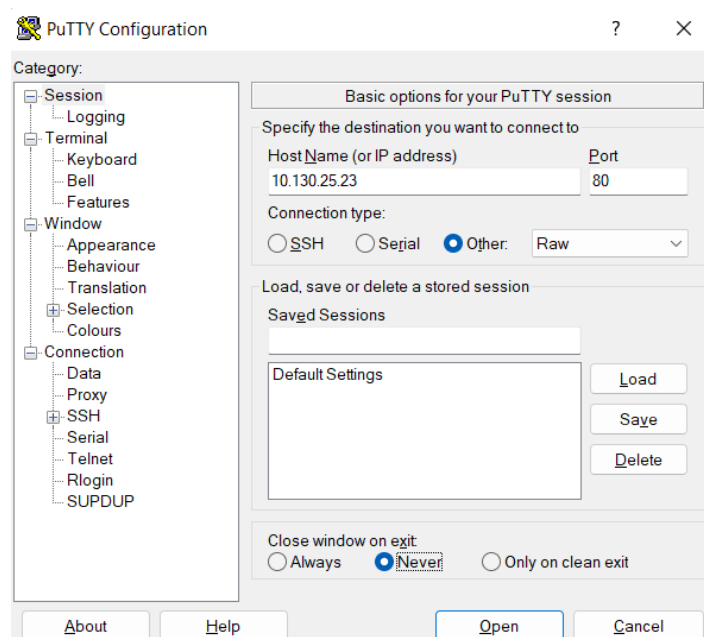


11. Then on the ISS we select the site → right click → **refresh**.
12. When we open the site, it finally looks like this:



How to access the site from my workstation with putty:

1. On **putty**, select the following settings:



2. When the command prompt opens, do a **GET request**:

- GET / HTTP/1.1
Host: 10.130.25.23

We receive the following answer:

```
10.130.25.23 - PuTTY
GET / HTTP/1.1
Host: 10.130.25.23

HTTP/1.1 200 OK
Content-Type: text/html
Last-Modified: Sat, 15 Oct 2022 10:56:26 GMT
Accept-Ranges: bytes
ETag: "93758ec584e0d81:0"
Server: Microsoft-IIS/10.0
X-Powered-By: ASP.NET
Date: Sat, 15 Oct 2022 11:08:59 GMT
Content-Length: 469

<html>
<head>
  <title>Rafael Cardoso DTA</title>
</head>
<body style="background-color:salmon;">
  <p>Hello, my name is Rafael Cardoso.</p>
  <p>I'm part of the Digital Team Academy at the HES-SO in Sierre.</p>
  <p>Best regards :)</p>

  
</body>
</html>
```

Access the site with my browser and capture the conversation with Wireshark:

*Ethernet 3

Fichier Editer Vue Aller Capture Analyser Statistiques Telephonie Wireless Outils Aide

No.	Time	Source	Destination	Protocol	Length	Info
520	18.2412...	10.28.2.245	10.130.25.23	HTTP	642	GET / HTTP/1.1
521	18.2527...	10.130.25.23	10.28.2.245	HTTP	220	HTTP/1.1 304 Not Modified

1.3 Create a site on :8080

1. Do the same steps as to create a site on :80 but **change the port to 8080**.

Site name: MySite8080Rafael Application pool: MySite8080Rafael Select...

Content Directory

Physical path: C:\Site DTA2 ...

Pass-through authentication

Connect as... Test Settings...

Binding

Type: http IP address: 10.130.25.23 Port: 8080

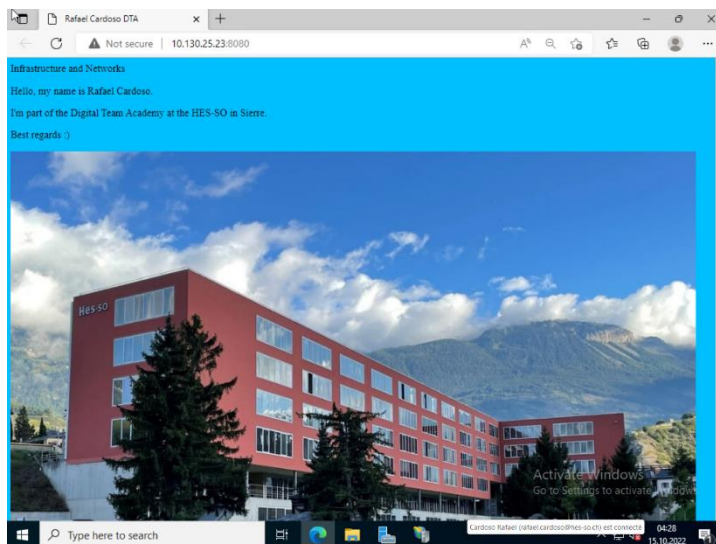
Host name:

Example: www.contoso.com or marketing.contoso.com

☒ Start Website immediately

OK Cancel

2. The site looks like that:



Access the site from my workstation with putty:

1. On **putty**, select the following settings:

PuTTY Configuration

Category:

- Session
- Logging
- Terminal
- Keyboard
- Bell
- Features
- Window
- Appearance
- Behaviour
- Translation
- Selection
- Colours
- Connection
- Data
- Proxy
- SSH
- Serial
- Telnet
- Rlogin
- SUPDUP

Basic options for your PuTTY session

Specify the destination you want to connect to

Host Name (or IP address): 10.130.25.23 Port: 8080

Connection type:

☐ SSH ☐ Serial ☒ Other: Raw

Load, save or delete a stored session

Saved Sessions

Default Settings

Load Save Delete

Close window on exit:

☐ Always ☒ Never ☐ Only on clean exit

About Help Open Cancel

2. This time when we do a **GET request** it doesn't work. Putty marks an error:

PUTTY Fatal Error



Network error: Connection timed out

OK

3. To solve this problem, we need to create a **rule** on the firewall that **allows the connection to 8080 ports**.

To do it, we need to go on Control Panel → System and Security → Windows Defender Firewall → Advanced settings.

4. On “**Inbound rules**”, create a new port rule.

New Inbound Rule Wizard



Rule Type

Select the type of firewall rule to create.

Steps:

Rule Type

Protocol and Ports

Action

Profile

Name

What type of rule would you like to create?

☐ Program

Rule that controls connections for a program.

☒ Port

Rule that controls connections for a TCP or UDP port.

☐ Predefined:

AllJoyn Router

Rule that controls connections for a Windows experience.

☐ Custom

Custom rule.

5. Choose the following settings:

Does this rule apply to TCP or UDP?

☒ TCP

☐ UDP

Does this rule apply to all local ports or specific local ports?

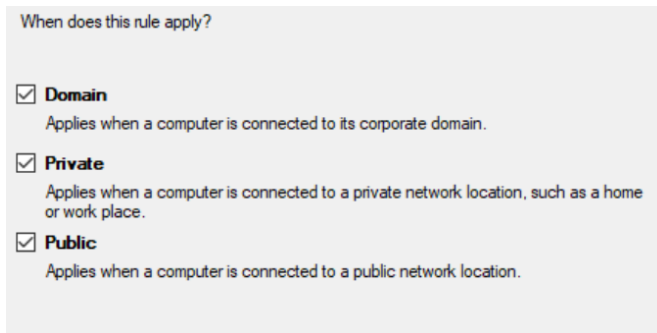
☐ All local ports

☒ Specific local ports:

Example: 80, 443, 5000-5010

< Back Next > Cancel

6. Select **“allow the connection”**.
7. Apply the rule to all the 3 options.



8. Give a **name to the rule** and click on **finish**.
9. Now, when we connect with Putty it works:

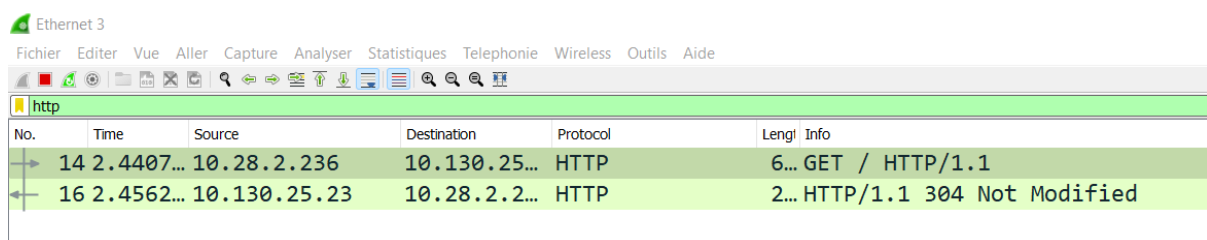
```
10.130.25.23 - PuTTY
GET / HTTP/1.1
Host:10.130.25.23

HTTP/1.1 200 OK
Content-Type: text/html
Last-Modified: Sat, 15 Oct 2022 11:27:35 GMT
Accept-Ranges: bytes
ETag: "57faaelf89e0d81:0"
Server: Microsoft-IIS/10.0
X-Powered-By: ASP.NET
Date: Sat, 15 Oct 2022 15:26:50 GMT
Content-Length: 476

<html>
<head>
<title>Rafael Cardoso DTA</title>
<head>Infrastructure and Networks </head>
<body style="background-color:DeepSkyBlue;">
<p>Hello, my name is Rafael Cardoso.</p>
<p>I'm part of the Digital Team Academy at the HES-SO in Sierre.</p>
<p>Best regards :)</p>

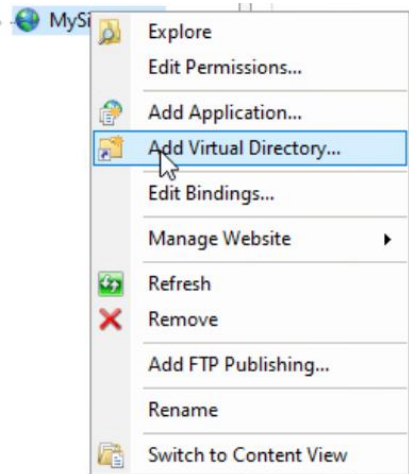

<body>
</html>
```

Access the site with my browser and capture the conversation with Wireshark:

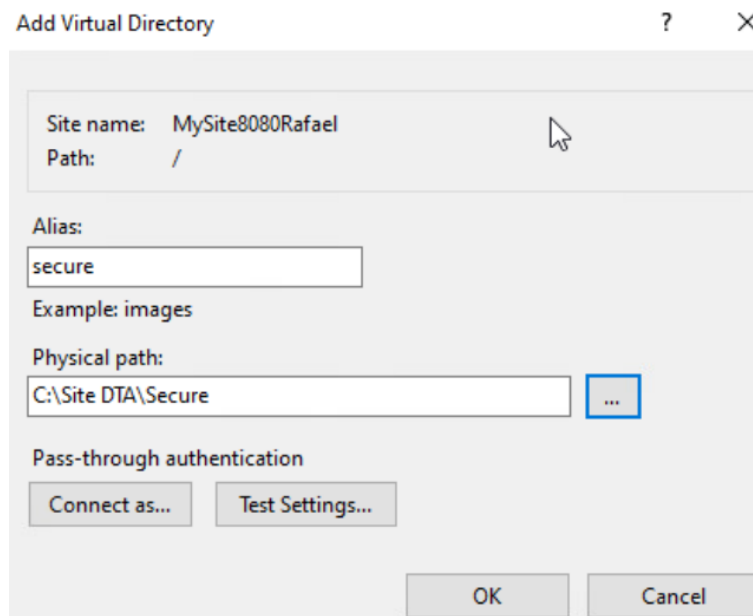


2.0 Authenticated access on a folder

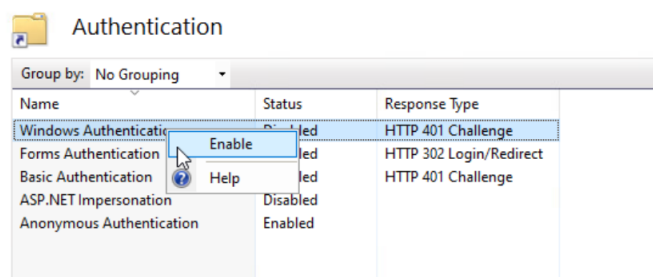
1. Right click on the site → “Add virtual directory”.



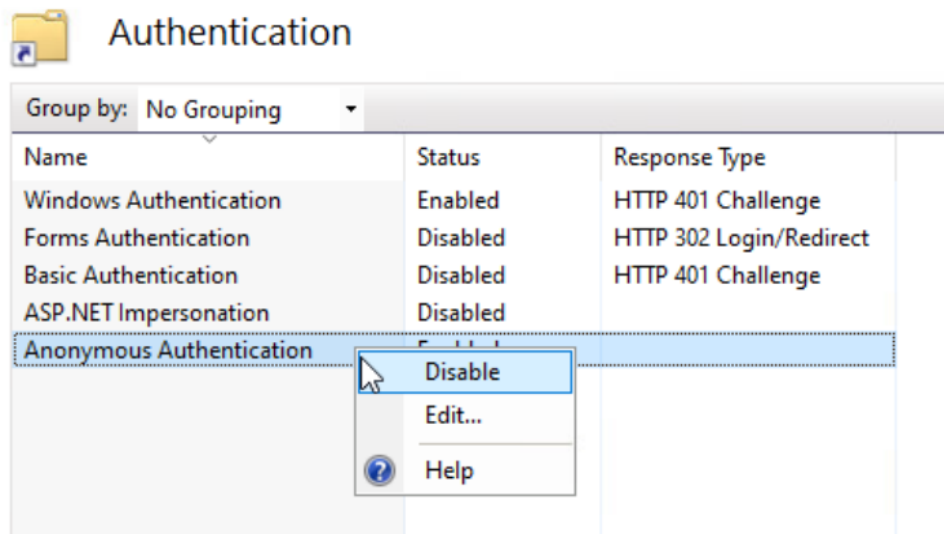
2. Choose a **folder name** and the **physical path**:



3. To add an authentication, we need to choose “**Authentication**” on the IIS.
4. Then we need to enable a type of authentication. Here, I choose the “**Windows Authentication**”. To enable it, we do a right click → **enable**.



5. We also need to **disable** the “**anonymous authentication**”.



6. Now, when we try to connect on our website it looks like this:

